

Market situation

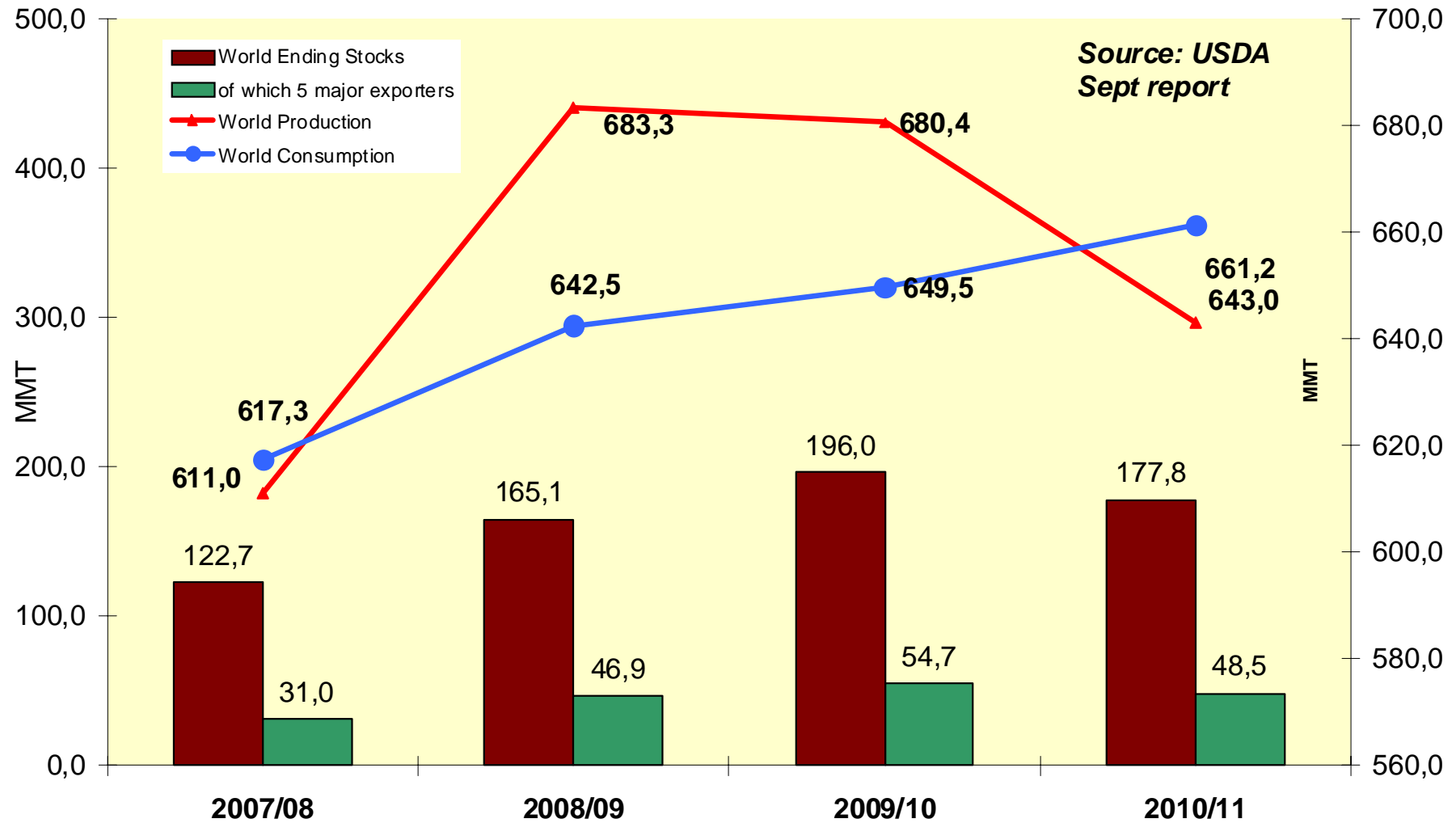
AGRI C 5

**Advisory group – Cereals – 24
September 2010**

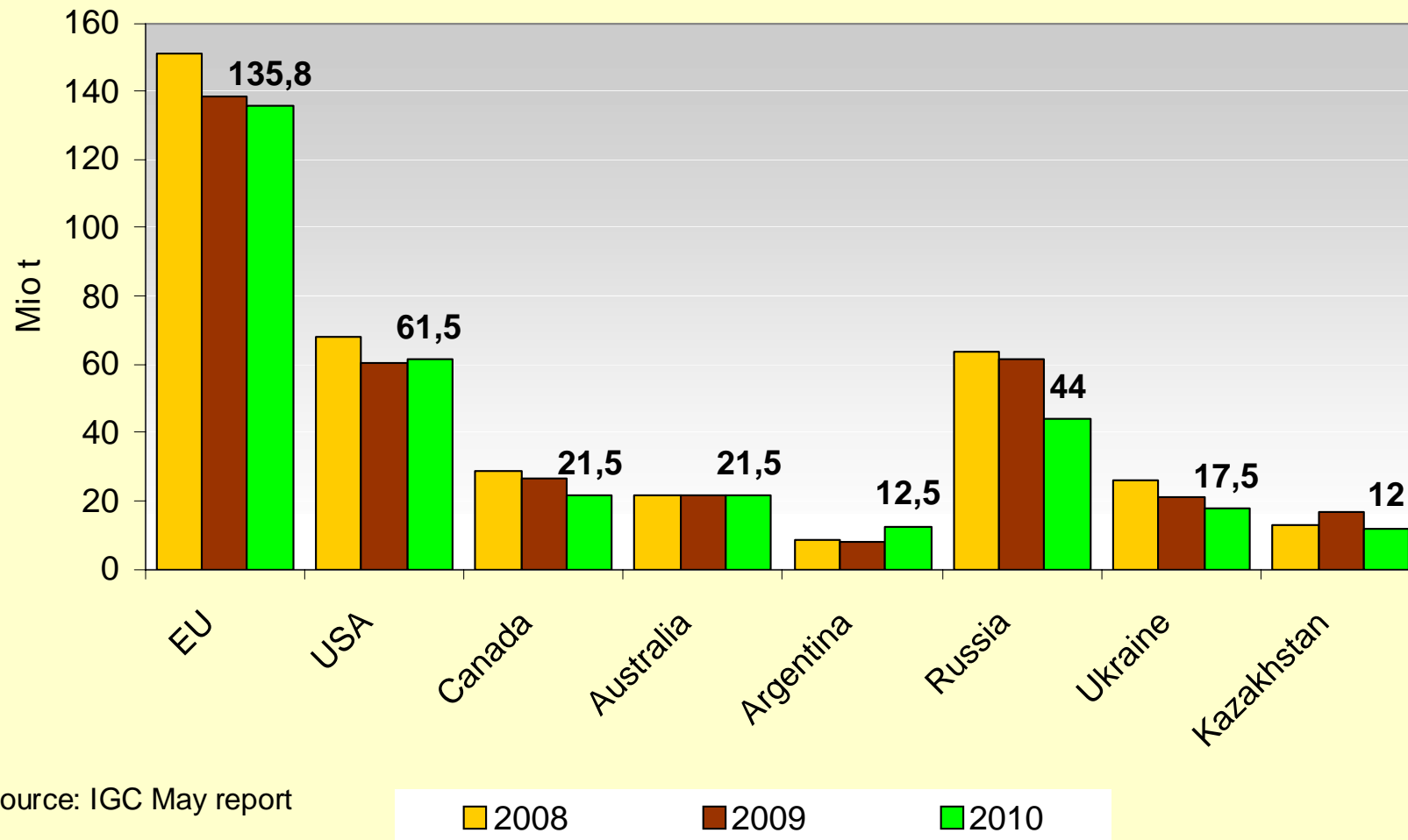


European Commission
Agriculture and
Rural Development

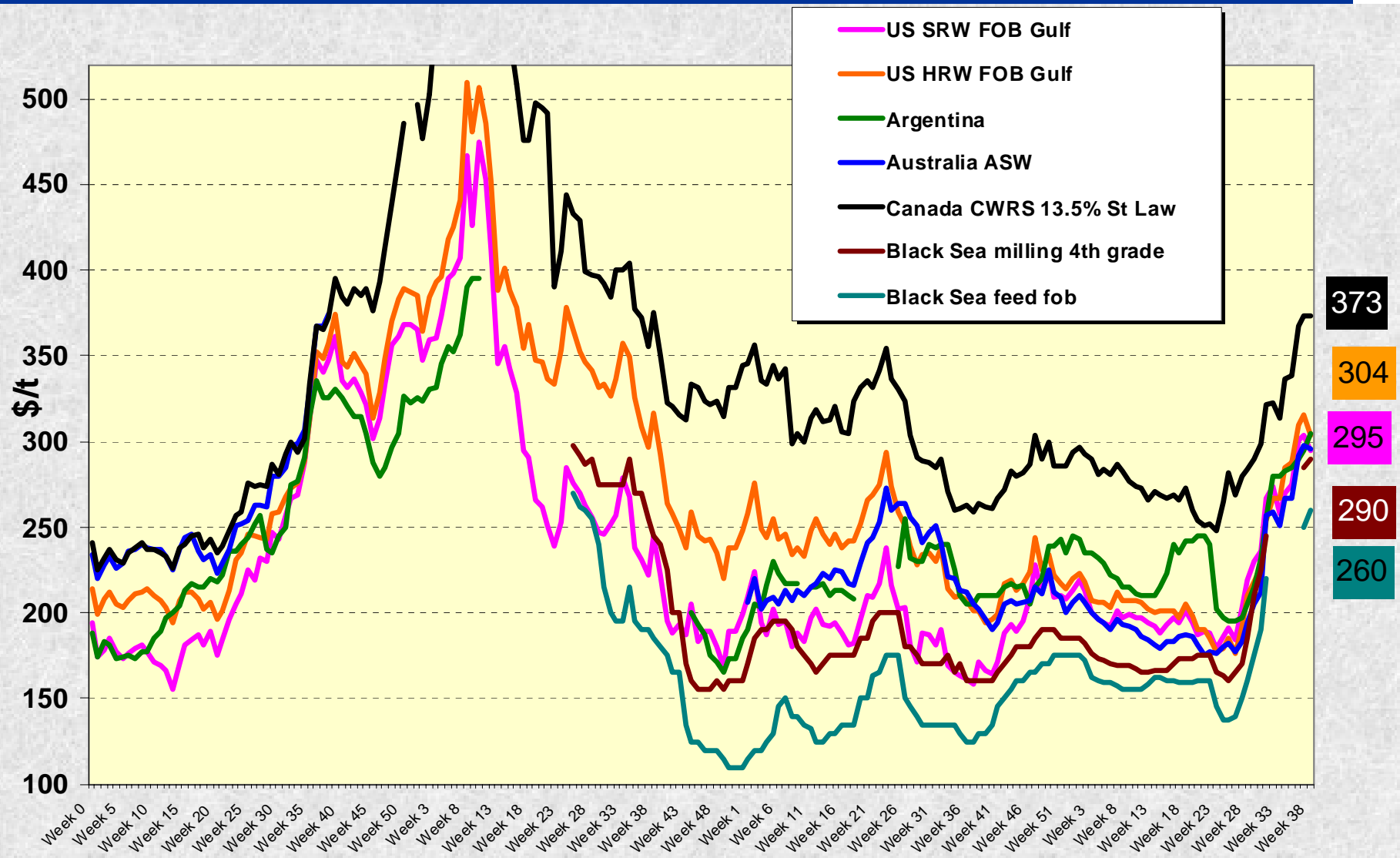
Wheat balance sheet (USDA)



Wheat production in the « Big 8 »

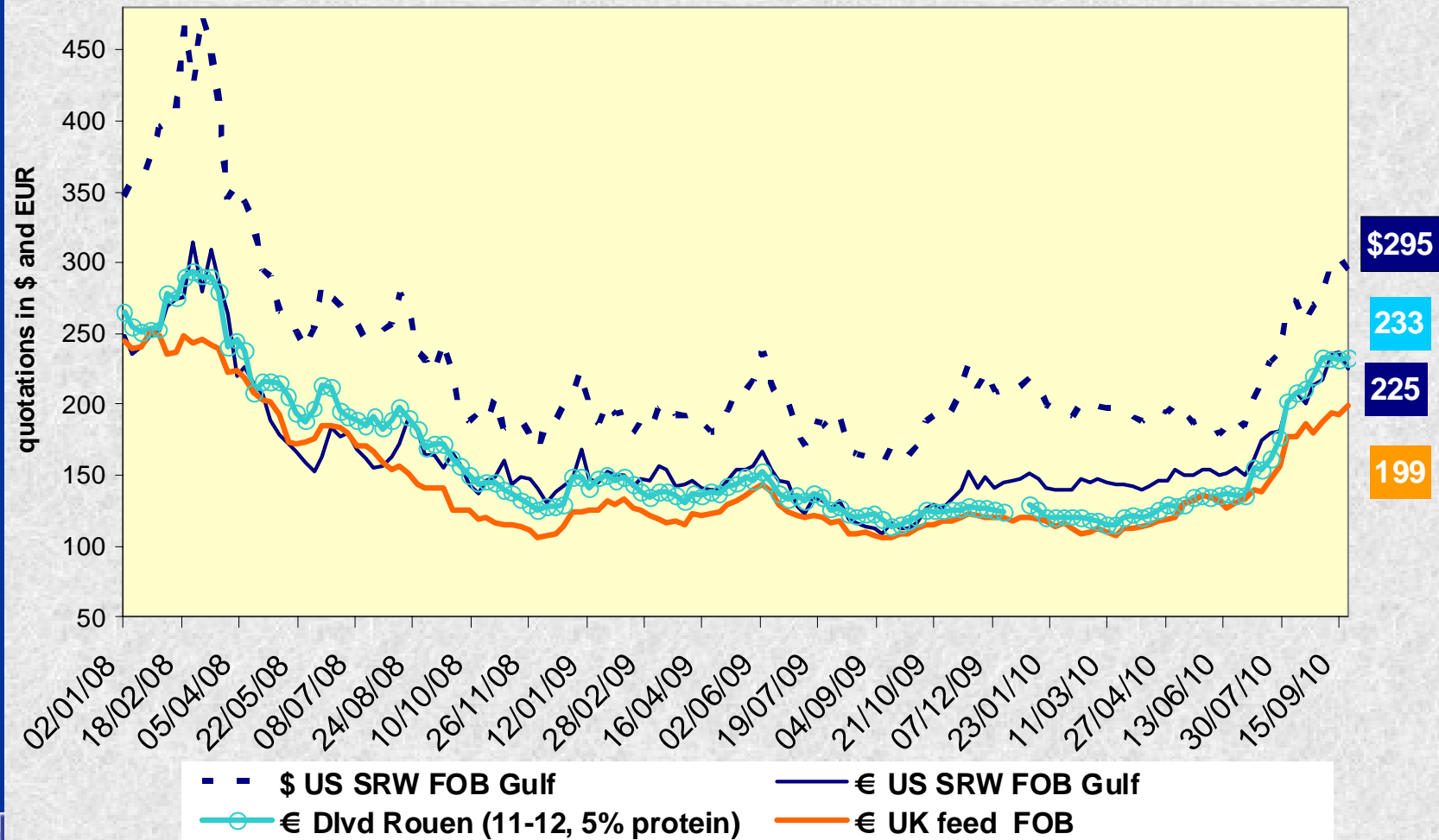


Wheat export prices since 1/1/2007

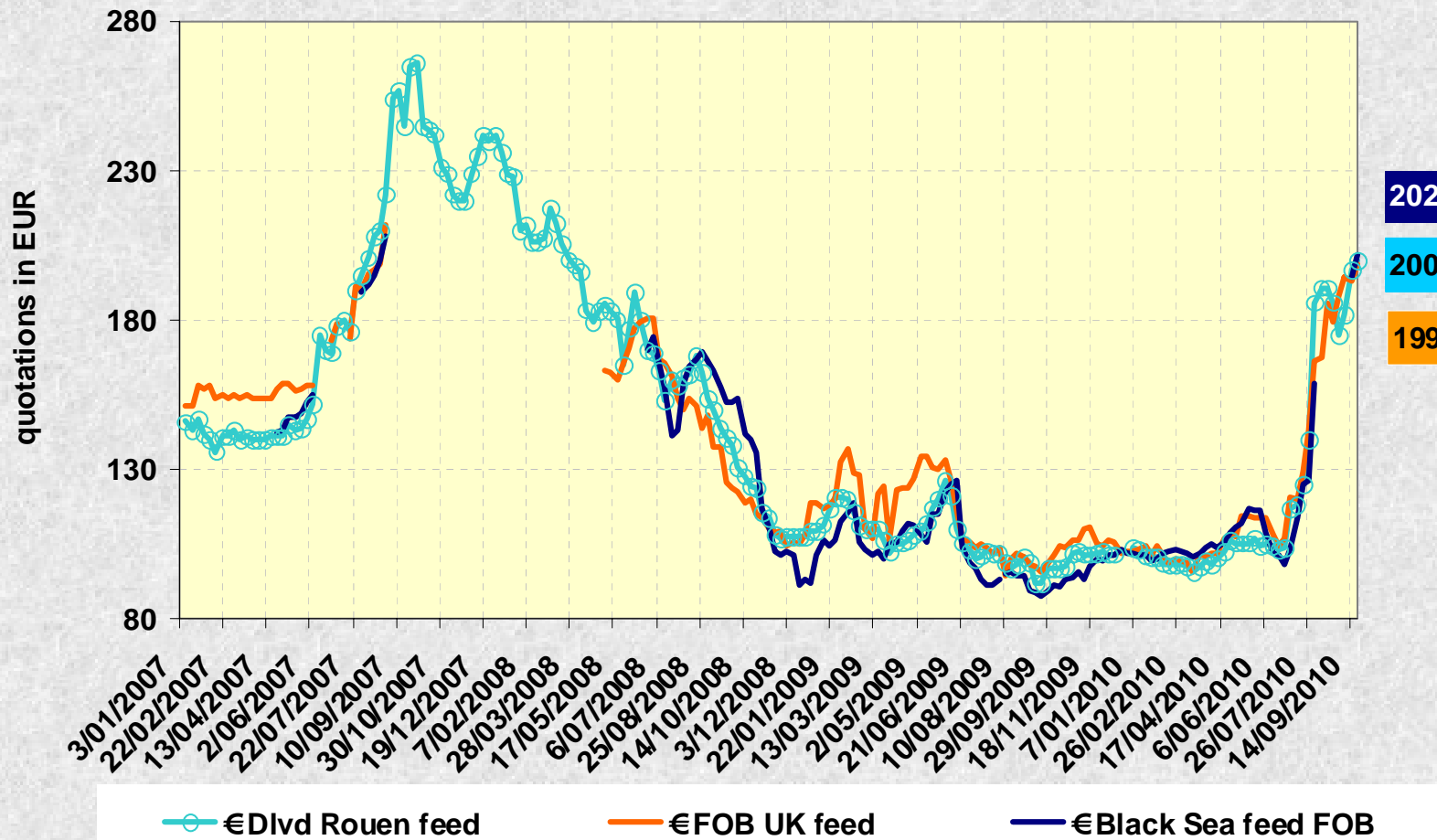


24 September 2010

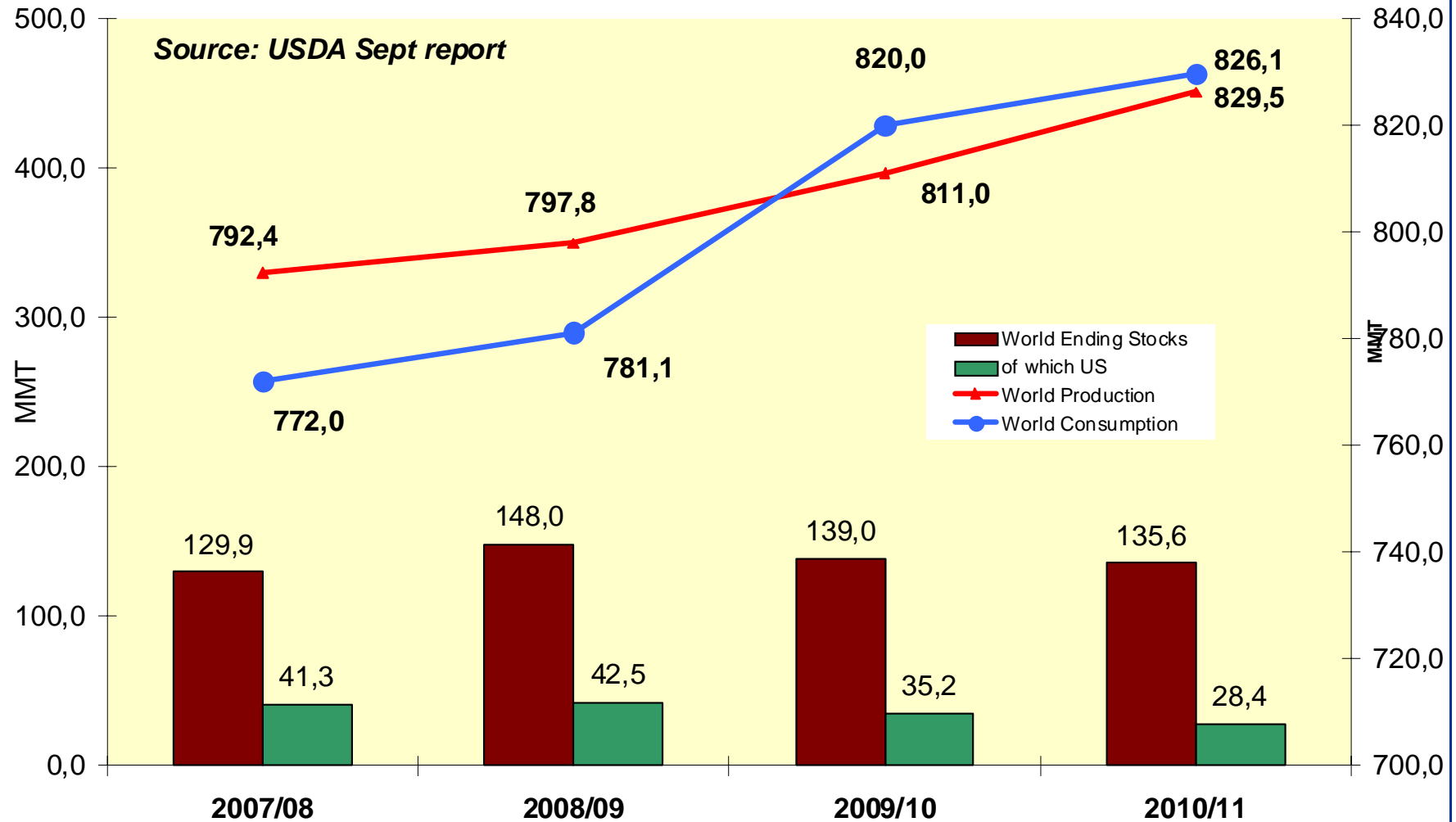
EU Wheat prices since 1/1/2008



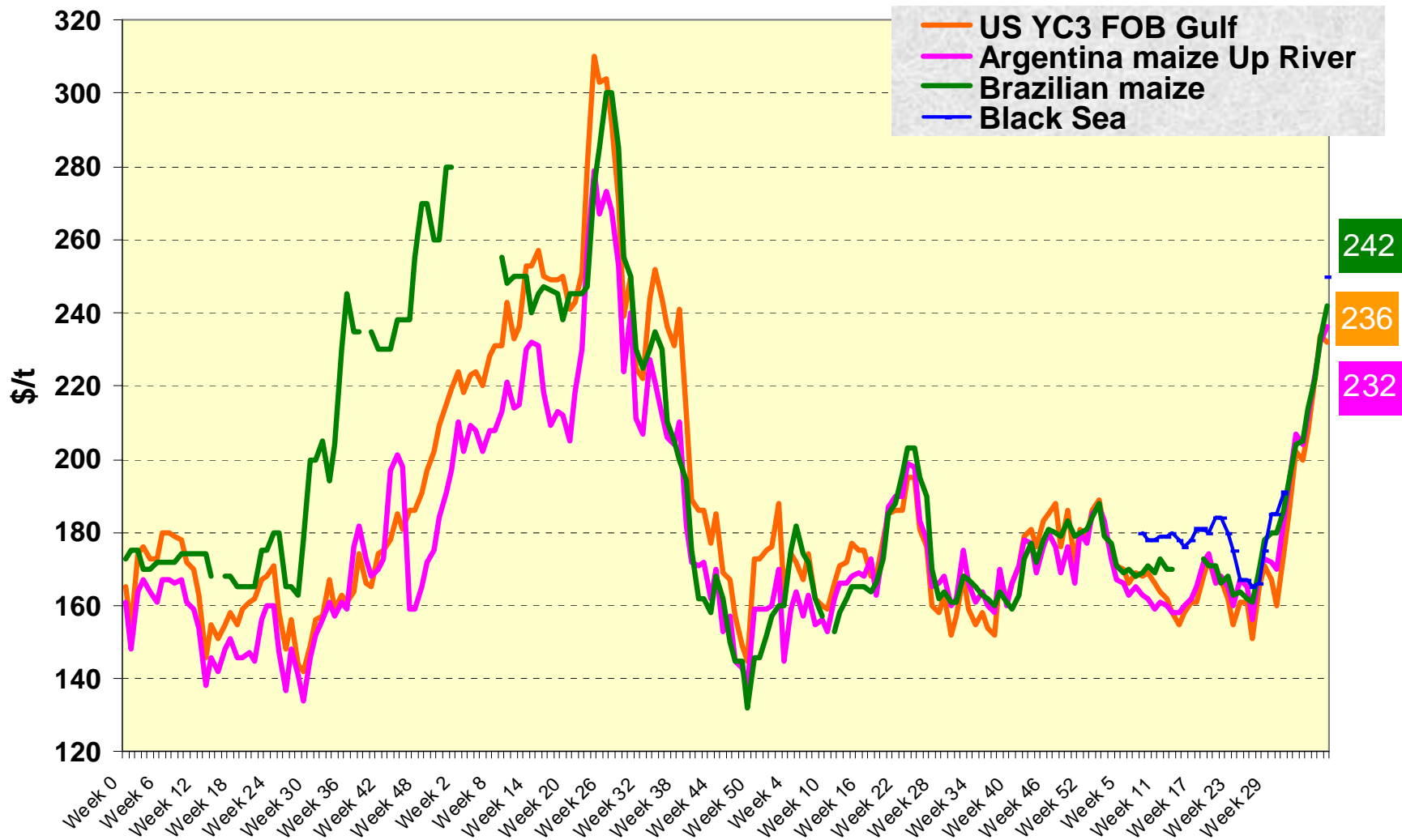
EU Barley prices since 01/01/2007



Maize balance sheet (USDA)

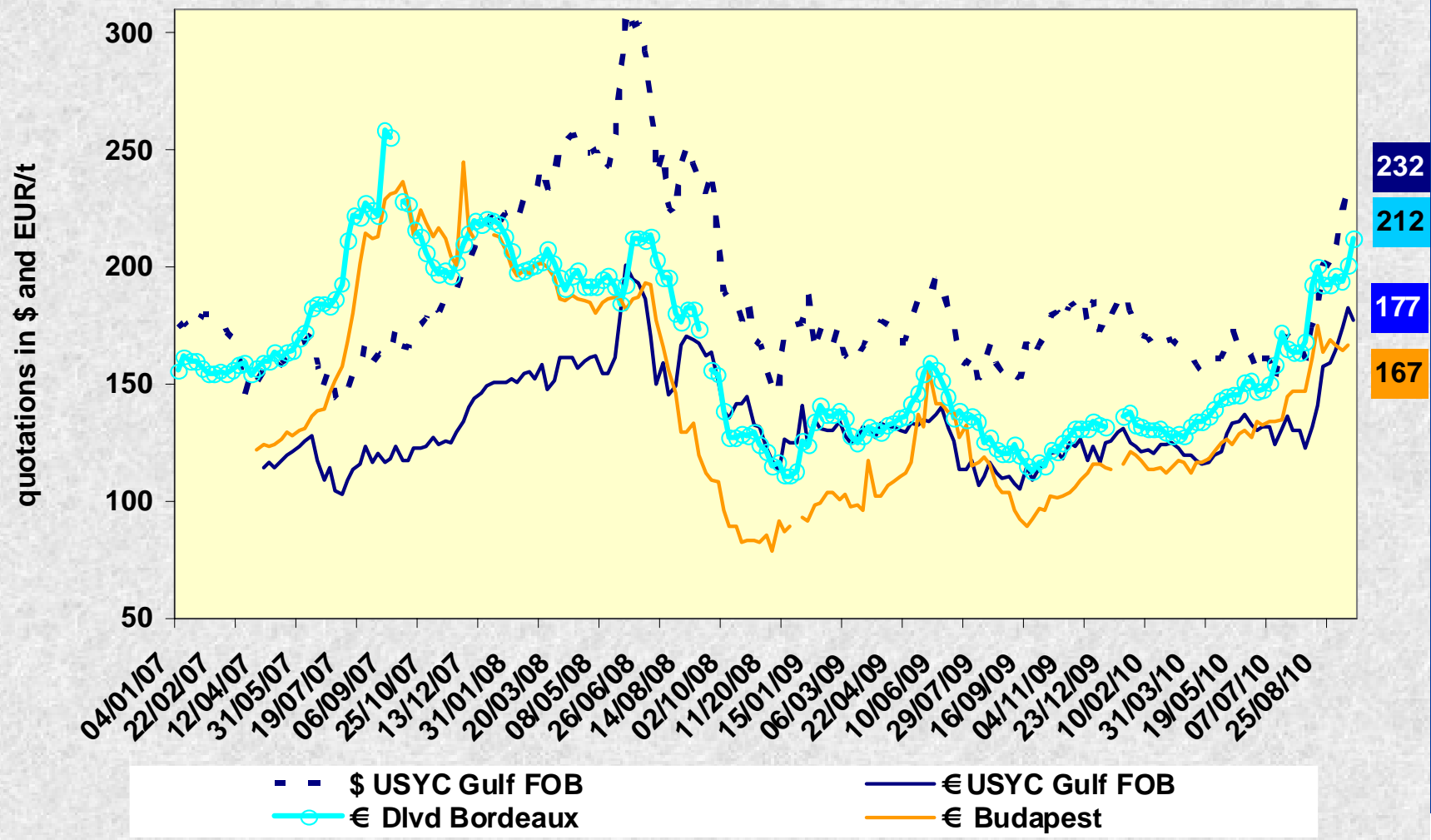


Maize export prices since 1/4/2007



24 September 2010

EU maize prices since 1/1/2008





**Thank you for your
attention!**



European Commission
Agriculture and
Rural Development